



Plaster & Fireproofing Pumps

Mayco Pump Division of Multiquip



Products Built for Maximum Productivity



Plaster & Fireproofing Pump
with Mixer



Plaster &
Fireproofing Pump



Fireproofing
Pump

MG-30 High Production Plaster and Fireproofing Pump

- Centralized grease panel — allows greasing of all bearings without opening the hood.
- Fully enclosed lubrication box — eliminates oil puddles under your pump.
- Gravity feed piston cup oiler — maximum efficiency; increases piston cup service life.
- Heavy duty drive line — thicker 2¹⁵/₁₆" crankshaft; McGill bearings; cast iron step cone pulley — for longer service life and minimum downtime for repairs.
- Adjustable piston stroke and piston cycling rates — allows fine tuning of pump output to meet production needs of any job. Eight possible pumping rates!
- Pump manifold cast from stronger steel with thicker walls — increases service life.
- Hardwire remote standard — allows easy control by nozzleman.

Mayco Plaster and Fireproofing Pumps — MG-30

Mayco material pumps = higher production = higher profits. The expertise and know-how that has made Mayco the leading manufacturer of small line concrete and grout pumps is an integral part of the design of the MG-30. Mayco material pumps are powerful, rugged, reliable and efficient — engineered to meet the challenging production requirements of high-volume projects and built to withstand the punishment on any job-site.

- Gravity Feed Piston Lubrication
- Heavy-duty drive assembly — consists of a larger 2¹⁵/₁₆" crankshaft, steel crank bearing and heavy-duty connecting rod.

MG-30 Options

- The "Mobile" Package:
An MG-30M pump with the Essick EM120 model 12ft.³ plaster/fireproofing mixer mounted on a trailer.

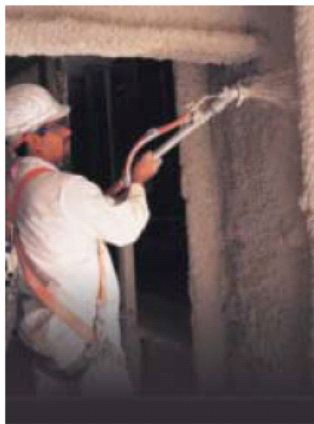
- The "Tag" Package:
Trailer-mounted MG-30T without mixer.
- Fire Chief Package:
Delivery rate maximized by modified material valving, which includes; steel balls, the FireWizard and a 3" pump outlet.
- The Plastering Package:
Features the standard material manifold and 2" pump outlet.

Designed for high production placement of:

- Exterior stucco, sand/cement exterior basecoat (brown & scratch)
- Gypsum plaster and lightweight aggregate
- Interior basecoat plaster
- Pool plaster, including Pebble-Tec®
- Fireproofing/high production



**The Mayco Fire Chief —
High-Volume Fireproofing
Applications**



For fireproofing applications, such as applying W.R. Grace Mono-Kote®, the pump stroke easily and quickly converts to long stroke.

The MG-30 offers increased volume and includes the following options:

- 3 ¾" material cylinders
- FireWizard Adaptor (Fire Proofing Kit)
- Steel balls and special valve seats
- Big 3" outlet on pump manifold



Variable volume output for different Fireproofing applications. Mayco has the right pump for your job.



The MSE-1SS is designed and engineered to provide pulse-free low volume production all day long. This mighty-mite is ideal for application of textures, full and simulated acoustics, fireproofing and bagged grout materials.

This innovative material pump is ideal for small-to-medium size jobs that require you to work in limited access areas. The MSE-1SS is so compact that you can transport it from job to job in the trunk of a car. Heavy-duty caster mounted wheels enable the operator to easily maneuver the Essick Mini-Sprayer on the job site.

- **Pump motor** — ¾ HP, 110V, single phase electric motor with reset button.
- **Air compressor** — Gast ¾ HP, 110V, single phase, rotary vane air compressor delivers 9 cfm at 10 psi.
- **Hopper** — large 24-gallon hopper fabricated from 18-gauge stainless steel includes easy-access pump clean-out.
- **Pump** — specially designed 1L3 rotor-stator delivers up to 0.3 ft.³/min of material at up to 80 psi delivery pressure. Sealed bearings on drive shaft increase service life.
- **Optional volume control** — allows operator to vary pump output with the turn of a knob.
- **Hose** — 1" x 25' material hose assembly with airline and remote control cord included with pump.
- **Controls** — 12V DC on/off control switch at nozzle with 25 feet of electrical cord.
- **Nozzle** — 1" x 36" light weight nozzle with two ⅜" one ½" and one ⅝" orifice tips included with pump.
- **Dimensions (LxHxW):** 26 ½" x 14 ½" x 30 ½"
- **Weight** — 185 lbs. complete.

Optional MSE1SS equipment:

- Hose extension kit — 1" x 25'
- Bypass valve — for volume control

SPECIFICATIONS

MG-30 Plaster/Fireproofing Pump

Model	Pumping Rate	Material Cylinder Size	Pump Pressure	Pump Outlet	Power	Fuel Capacity gal.	Compressor	Weight lb.	LxWxH in.
Plaster/Mortar Pump (TAG) without mixer									
MG30T2G	6½ yd.³/hr.	3½" x 6"	1000 psi	2"	30 HP Wisconsin VH4D gasoline	5.3	10 CFM @ 90 psi	2260	121" x 59" x 46"
MG30T2D	6½ yd.³/hr.	3½" x 6"	1000 psi	2"	35 HP Hatz 2M41 diesel	5.3	10 CFM @ 90psi	2560	121" x 59" x 46"
Plaster/Mortar Pump (Mobile) with 12 ft.³ mixer									
MG30M2G	6½ yd.³/hr.	3½" x 6"	1000 psi	2"	30 HP Wisconsin VH4D gasoline	5.3	10 CFM @ 90 psi	3450	169" x 86" x 84"
MG30M2D	6½ yd.³/hr.	3½" x 6"	1000 psi	2"	35 HP Hatz 2M41 diesel	5.3	10 CFM @ 90 psi	3750	169" x 86" x 84"
Fireproofing Pump (TAG) without mixer									
MG30T3G	9½ yd.³/hr.	3¾" x 8"	1000 psi	3"	30 HP Wisconsin VH4D gasoline	5.3	10 CFM @ 90 psi	2260	121" x 59" x 46"
MG30T3D	9½ yd.³/hr.	3¾" x 8"	1000 psi	3"	35 HP Hatz 2M41 diesel	5.3	10 CFM @ 90 psi	2560	121" x 59" x 46"
Fireproofing Pump (Mobile) with 12 ft.³ mixer									
MG30M3G	9½ yd.³/hr.	3¾" x 8"	1000 psi	3"	30 HP Wisconsin VH4D gasoline	5.3	10 CFM @ 90 psi	3460	169" x 86" x 84"
MG30M3D	9½ yd.³/hr.	3¾" x 8"	1000 psi	3"	35 HP Hatz 2M41 diesel	5.3	10 CFM @ 90 psi	3750	169" x 86" x 84"

© COPYRIGHT 2003, MULTIQUIP, INC.

Model — EM120S	Capacity (bags)	Capacity (ft.³)	Power	Drive	Dump Action
Mixer	3½ to 4	12	8.5 HP Hatz Diesel 1B30 or 11.0 HP Honda GX-340	Mechanical	Manual

MSE-1SS

Model	Pumping Rate	Pump type	Power	Compressor	Weight lbs. (kg)	Dimensions LxWxH
MSE-1SS	3 gal./min.	1L3 Rotor-Stator	1.5 HP 110V AC	9 CFM @ 10psi	175 (79.5)	26½" x 14½" x 30½"

Your Multiquip dealer is:

Superiorequipmentonline.com



Atlanta • Boise • Newark • Montreal, Canada
Manchester, UK • Rio de Janeiro, Brazil • Guadalajara, Mexico